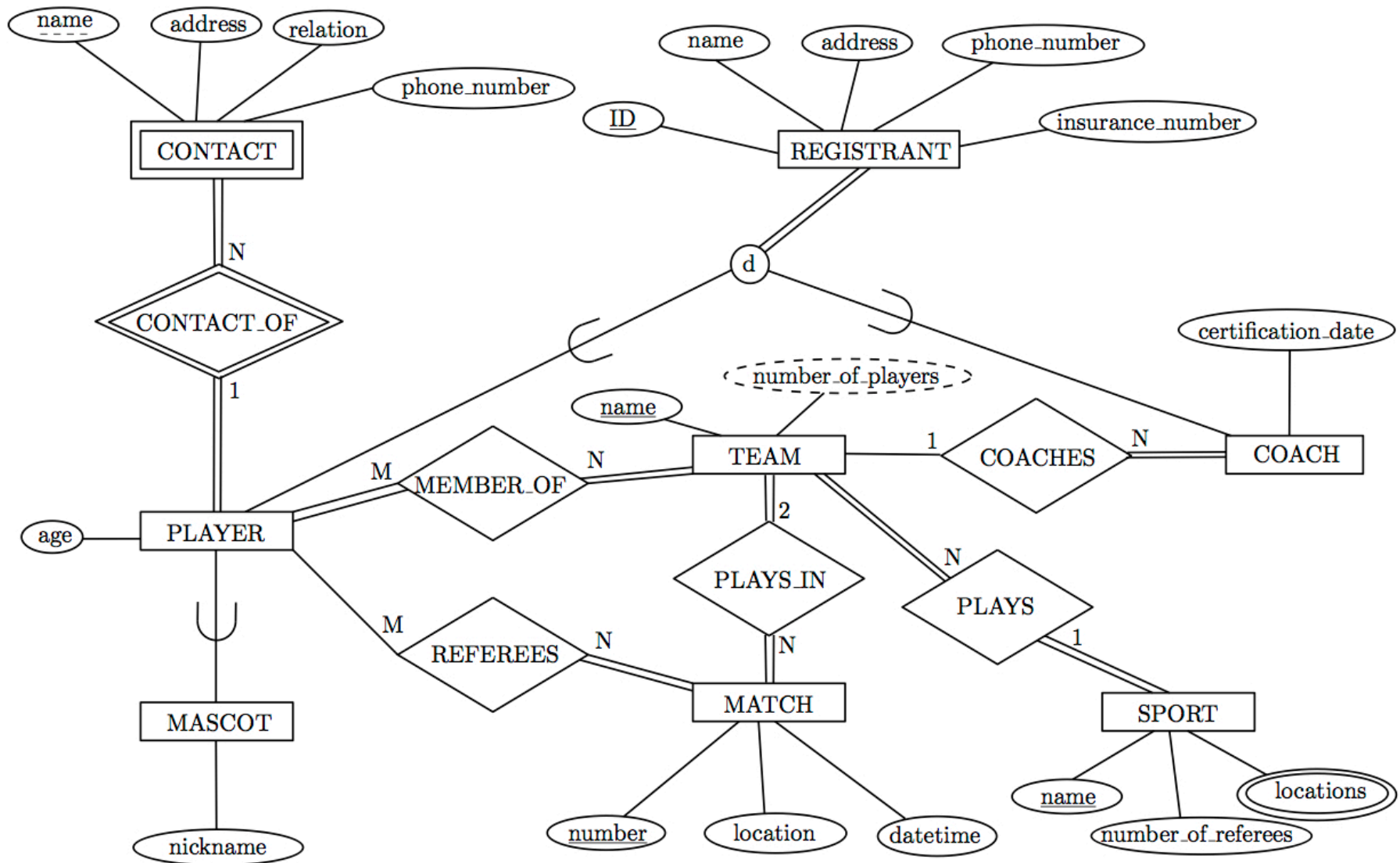
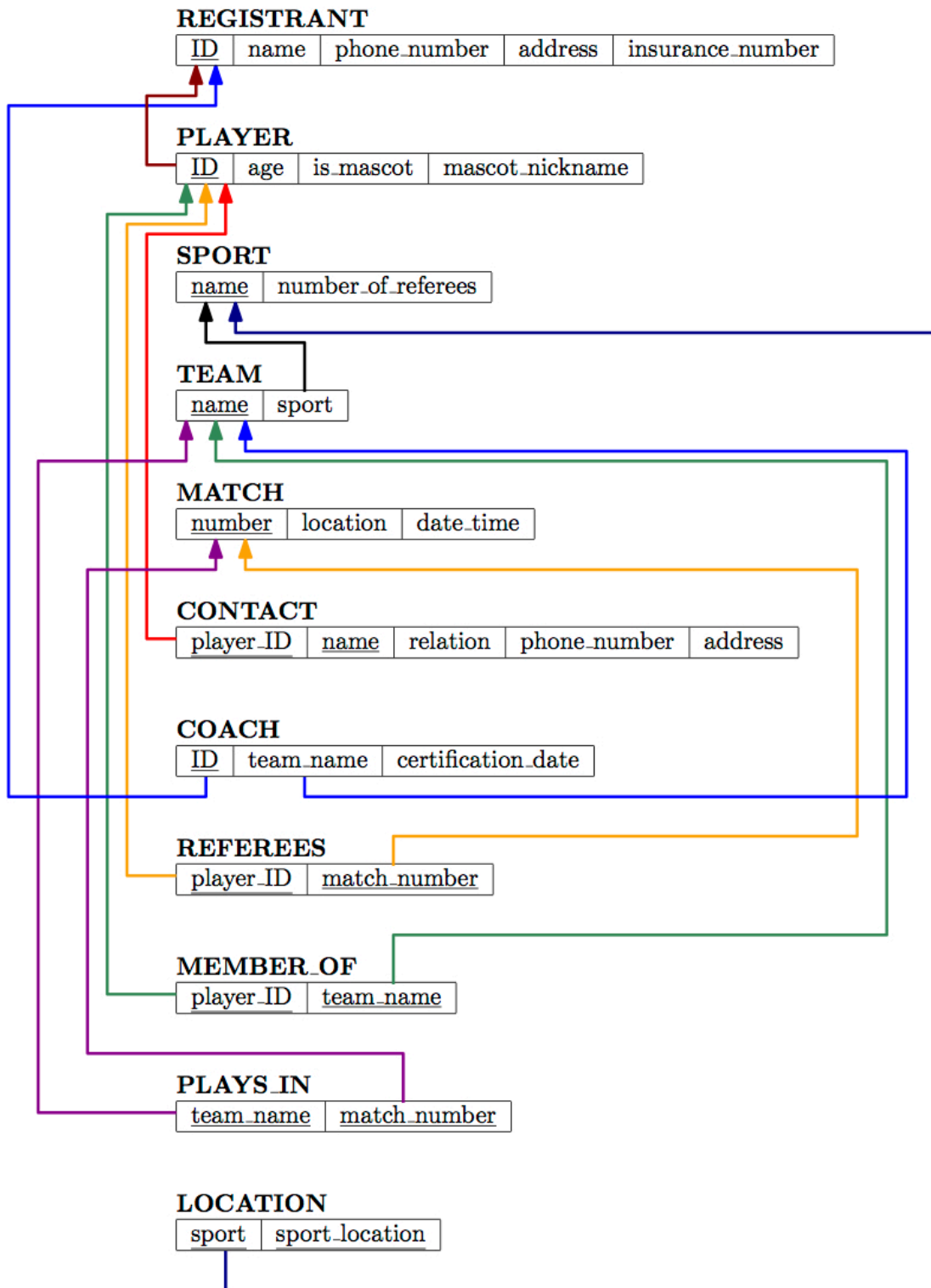


CS 338 – Winter 2014  
Solutions to Assignment #3

Part 1: Question 1:



**Part 1: Question 2:**



## **Part 2:**

### **Question 1:**

```
SELECT ename  
FROM Emp  
WHERE salary > 100000  
      AND age > 50
```

### **Question 2:**

Both views are not *insertable* (i.e. cannot accept inserting a new row), for the following reasons: The first view is missing the key column “eid”. The second view, beside missing columns, also have an aggregate function “AVG”.

### **Question 3:**

1. This update statement would succeed, and the result is that every row, in the base table, with (salary = 100,000) will have a *salary* value of 110,000.
2. This update statement would *Fail*, because the view has an aggregate function “AVG”, and hence, it is not *updatable*. For a view to be updatable, there must be a one-to-one relationship between the rows in the view and the rows in the underlying table.